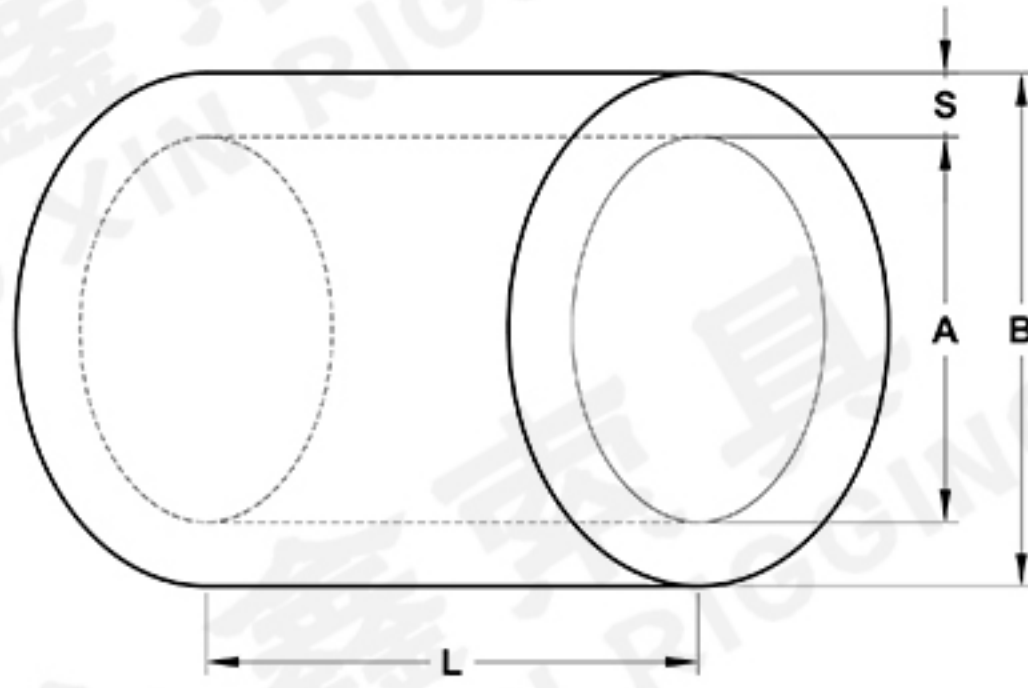


ALUMINIUM FERRULES SPECIFICATION EN13411-3 (DIN3093)



YXR1244

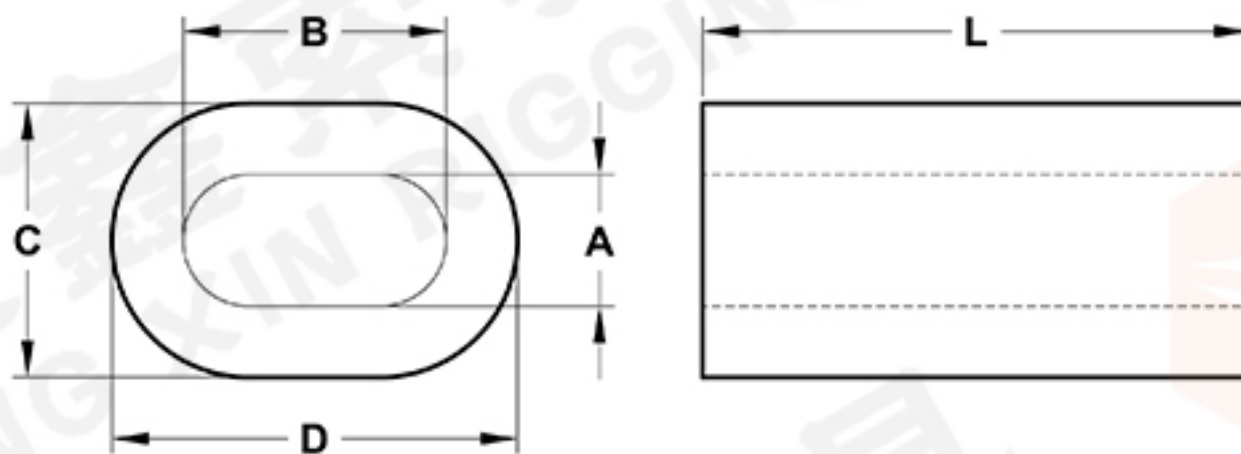
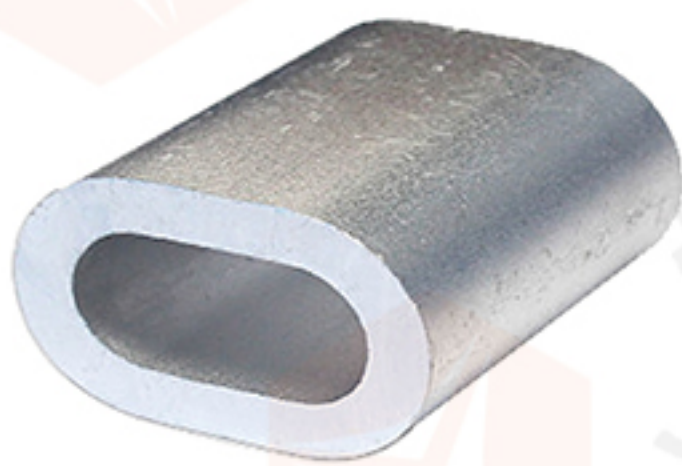
ITEM NO.	FERRULE CODE	WEIGHT PER 1000 (KG)	DIMENSIONS (MM)			
			A	B	S	L
YXR1244-01	1	0.098	1.2	2.4	0.65	5
YXR1244-02	1.5	0.176	1.7	3.4	0.75	6
YXR1244-03	2	0.285	2.2	4.4	0.85	7
YXR1244-04	2.5	0.439	2.7	5.4	1.05	9
YXR1244-05	3	0.907	3.3	6.6	1.25	11
YXR1244-06	3.5	1.18	3.8	7.6	1.5	13
YXR1244-07	4	1.63	4.4	8.8	1.7	14
YXR1244-08	4.5	2.39	4.9	9.8	1.9	16
YXR1244-09	5	3.62	5.5	11.0	2.1	18
YXR1244-10	6	5.87	6.6	13.2	2.5	21
YXR1244-11	6.5	7.18	7.2	14.4	2.7	23
YXR1244-12	7	9.83	7.8	15.6	2.9	25
YXR1244-13	8	12.96	8.8	17.6	3.3	28
YXR1244-14	9	18.94	9.9	19.8	3.7	32
YXR1244-15	10	24.09	10.9	21.8	4.1	35
YXR1244-16	11	35.35	12.1	24.2	4.5	39
YXR1244-17	12	44.18	13.2	26.4	4.9	42
YXR1244-18	13	59.86	14.2	28.4	5.4	46
YXR1244-19	14	73.5	15.3	30.6	5.8	49
YXR1244-20	16	111	17.5	35.0	6.7	56
YXR1244-21	18	156	19.6	39.2	7.6	63
YXR1244-22	20	217	21.7	43.4	8.4	70
YXR1244-23	22	292	24.3	48.6	9.2	77
YXR1244-24	24	376	26.4	52.8	10.0	84
YXR1244-25	26	481	28.5	57.0	10.9	91
YXR1244-26	28	603	31.0	62.0	11.7	98
YXR1244-27	30	739	33.1	66.2	12.5	105
YXR1244-28	32	897	35.2	70.4	13.4	112
YXR1244-29	34	1077	37.8	75.6	14.2	119
YXR1244-30	36	1275	39.8	79.6	15.0	126
YXR1244-31	38	1503	41.9	83.8	15.8	133
YXR1244-32	40	1734	44.0	88.0	16.6	140
YXR1244-3	42	2024	46.2	92.4	17.5	147
YXR1244-34	44	2314	48.4	96.8	18.3	154
YXR1244-35	46	2662	50.6	101.2	19.2	161
YXR1244-36	48	3010	52.8	105.6	20.0	168
YXR1244-37	50	3412	55.0	110.0	20.8	175
YXR1244-38	52	3813	57.2	114.4	21.6	182
YXR1244-39	54	4293	59.4	118.8	22.5	189
YXR1244-40	56	4772	61.6	123.2	23.3	196
YXR1244-41	58	5326	63.8	127.6	24.2	203
YXR1244-42	60	5880	66.0	132.0	25.0	210



YXR1245

SEAMLESS ALUMINIUM ROUND SLEEVES

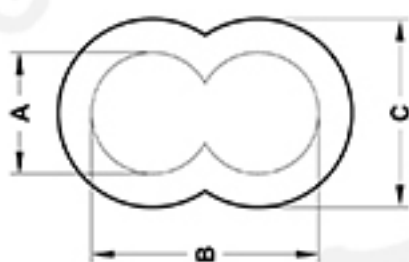
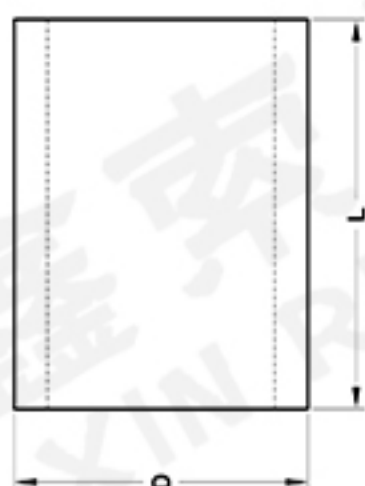
ITEM NO.	FERRULE CODE	WEIGHT PER 1000 (KG)	DIMENSIONS (IN)			
			A	B	S	L
YXR1245-01	#6	8	11	16	2.5	25
YXR1245-02	#7	12	12.7	18.5	2.9	30
YXR1245-03	#8	18	14.6	21.2	3.3	34
YXR1245-04	#9	25	16.4	23.8	3.7	38
YXR1245-05	#10	33	18.1	26.3	4.1	42
YXR1245-06	#11	45	20	29	4.5	47
YXR1245-07	#12	57	21.8	31.6	4.9	50
YXR1245-08	#13	74	23.6	34.4	5.4	55
YXR1245-09	#14	92	25.4	37	5.8	59
YXR1245-10	#15	138	29	42.4	6.7	67
YXR1245-11	#18	212	32.5	48.5	8	76
YXR1245-12	#20	380	36	58	11	84
YXR1245-13	#22	440	39.5	61.5	11	92
YXR1245-14	#24	530	43.1	65.5	11.2	101
YXR1245-15	#26	660	46.7	70.5	11.9	109
YXR1245-16	#28	760	51.2	75	11.9	118
YXR1245-17	#30	930	54.6	80	12.7	126
YXR1245-18	#32	1110	58.2	85	13.4	134
YXR1245-19	#34	1390	61.4	91	14.8	143
YXR1245-20	#36	1570	65	95	15	152
YXR1245-21	#38	1830	68.4	100	15.8	160
YXR1245-22	#40	2140	72.8	106	16.6	168
YXR1245-23	#44	2820	79.6	116	18.2	184
YXR1245-24	#48	3620	86.4	126	19.8	200
YXR1245-25	#52	4560	93.2	136	21.4	216
YXR1245-26	#56	5680	101	147	23	232
YXR1245-27	#60	7000	108.8	158	24.6	248
YXR1245-28	#65	10500	119.2	176	28.4	284
YXR1245-29	#70	11730	125	185	30	294
YXR1245-30	#75	14360	134	198	32	315
YXR1245-31	#80	17300	142	210	34	336
YXR1245-32	#85	20900	153	225	36	357
YXR1245-33	#90	24900	164	240	38	378
YXR1245-34	#95	28800	175	250	40	399
YXR1245-35	#100	34200	184	268	42	420



YXR1246

US TYPE ALUMINIUM OVAL SLEEVES

ITEM NO.	SIZE (IN)	WEIGHT PER 1000 (KG)	DIMENSIONS (MM)				
			A	B	C	D	L
YXR1246-01	1/4	10.4	7.54	15.08	13.49	21.43	25.40
YXR1246-02	5/16	19.5	9.52	19.05	16.67	26.19	30.54
YXR1246-03	3/8	24.0	11.11	21.43	19.05	29.37	34.93
YXR1246-04	7/16	49.9	12.70	25.40	23.02	35.72	43.67
YXR1246-05	1/2	74.8	15.08	29.77	26.19	41.28	49.21
YXR1246-06	9/16	99.7	18.26	34.92	30.96	48.02	56.36
YXR1246-07	5/8	145	19.05	38.10	34.92	53.18	63.50
YXR1246-08	3/4	236	21.03	42.86	38.10	60.33	73.03
YXR1246-09	7/8	304	24.21	47.62	42.86	66.68	76.20
YXR1246-10	1	567	27.78	53.37	50.01	78.58	95.25
YXR1246-11	1-1/8	780	32.54	65.09	58.74	91.28	108.74
YXR1246-12	1-1/4	970	35.72	70.64	63.50	98.43	112.71
YXR1246-13	1-1/2	1768	42.07	83.74	79.38	120.65	140.89

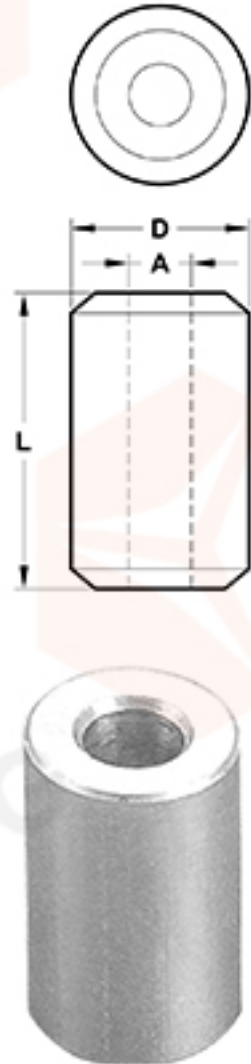


YXR1247

US TYPE ALUMINIUM HOURGLASS SLEEVES

ITEM NO.	SIZE		WEIGHT PER 1000 (KG)	DIMENSIONS									
				A		B		C		D		L	
	IN	MM		IN	MM	IN	MM	IN	MM	IN	MM	IN	MM
YXR1247-01	3/64	1.19	0.276	1/16	1.58	1/8	3.18	9/64	3.6	13/64	5.2	3/8	9.53
YXR1247-02	1/16	1.58	0.433	5/64	1.98	5/32	3.97	11/64	4.4	1/4	6.35	3/8	9.53
YXR1247-03	5/64	1.98	0.645	3/32	2.38	3/16	4.76	13/64	5.2	5/16	7.94	3/8	9.53
YXR1247-04	3/32	2.38	1.45	1/8	3.18	1/4	6.35	9/32	7.1	13/32	10.3	1/2	12.7
YXR1247-05	1/8	3.18	2.70	5/32	3.97	5/16	7.94	11/32	8.7	1/2	12.7	5/8	15.88
YXR1247-06	5/32	3.97	3.67	3/16	4.76	3/8	9.53	3/8	9.53	9/16	14.29	11/16	17.4
YXR1247-07	3/16	4.76	7.18	7/32	5.56	7/16	11.11	7/16	11.11	21/32	16.7	1	25.40
YXR1247-08	7/32	5.56	10.00	1/4	6.35	1/2	12.7	1/2	12.7	3/4	19.1	1 1/16	26.9
YXR1247-09	1/4	6.35	11.76	9/32	7.14	9/16	14.29	17/32	13.5	13/16	20.6	1 1/8	28.58
YXR1247-10	9/32	7.14	13.62	5/16	7.94	5/8	15.88	9/16	14.29	7/8	22.2	1 3/16	30.1
YXR1247-11	5/16	7.94	20.94	3/8	9.53	23/32	19.05	11/16	17.5	1 1/32	26.2	1 1/4	31.75
YXR1247-12	3/8	9.53	28.18	7/16	11.11	27/32	22.23	3/4	19.1	1 5/32	29.4	1 7/16	36.5
YXR1247-13	7/16	11.11	52.00	1/2	12.7	1	25.40	15/16	23.8	1 7/16	36.5	1 11/16	42.8
YXR1247-14	1/2	12.7	80.15	9/16	14.29	1 1/8	28.58	1 1/16	26.9	1 5/8	41.3	2	50.8
YXR1247-15	9/16	14.29	99.88	5/8	15.88	1 1/4	31.75	1 1/8	28.58	1 3/4	44.5	2 1/8	53.9
YXR1247-16	5/8	15.88	139.78	11/16	17.46	1 3/8	34.93	1 1/4	31.75	1 15/16	49.2	2 1/2	63.5

US TYPE ALUMINIUM STOP BOTTOMS



YXR1248

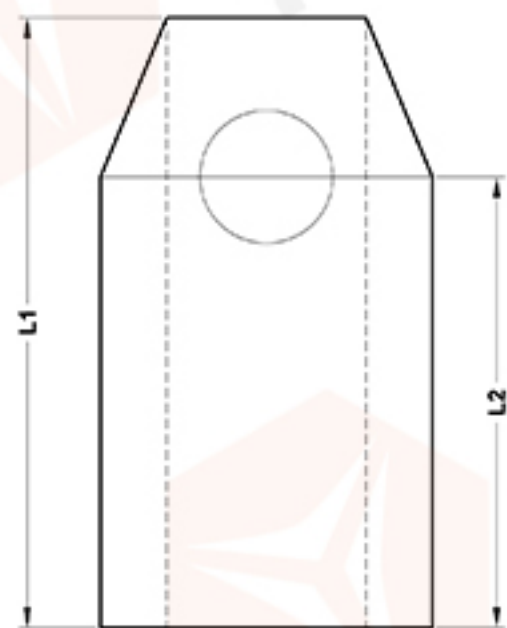
ITEM NO.	SIZE (IN)	WEIGHT PER 1000 (KG)	DIMENSIONS (MM)		
			A	D	L
YXR1248-01	3/64	0.236	1.54	4.40	4.16
YXR1248-02	1/16	0.278	1.92	6.35	4.16
YXR1248-03	5/64	0.282	2.38	6.35	4.16
YXR1248-04	3/32	1.05	2.90	8.72	7.95
YXR1248-05	1/8	0.949	3.86	8.72	7.95
YXR1248-06	5/32	1.76	4.70	11.11	8.73
YXR1248-07	3/16	1.69	5.54	11.11	8.73
YXR1248-08	7/32	1.50	6.35	11.11	8.73
YXR1248-09	1/4	9.07	7.20	17.46	17.46
YXR1248-10	5/16	7.46	9.53	17.46	17.46
YXR1248-11	3/8	6.58	11.13	17.46	17.46
YXR1248-12	1/2	30.32	14.28	26.98	26.98
YXR1248-13	9/16	38.52	15.88	28.60	31.75
YXR1248-14	5/8	47.88	17.46	31.75	31.75



YXR1249

ALUMINIUM FERRULES JIS TYPE

ITEM NO.	FERRULE CODE	WEIGHT PER 1000 (KG)	DIMENSIONS (MM)				
			A	B	C	D	L
YXR1249-01	6	10	7.00	13.80	3.20	3.80	24
YXR1249-02	7	14	8.20	16.20	3.60	4.25	26
YXR1249-03	8	22	9.40	18.60	4.00	4.70	32
YXR1249-04	9	29	10.22	20.70	4.30	5.52	36
YXR1249-05	10	37	11.60	23.00	4.50	5.50	40
YXR1249-06	12	63	13.62	27.60	5.30	6.92	48
YXR1249-07	14	88	15.89	32.20	5.53	7.42	56
YXR1249-08	16	130	18.16	36.80	6.32	8.48	64
YXR1249-09	18	186	20.43	41.40	7.11	9.54	72
YXR1249-10	20	245	23.10	46.00	7.70	9.20	80
YXR1249-11	22	319	25.40	50.60	8.30	10.00	88
YXR1249-12	24	408	27.80	55.30	8.90	10.90	96
YXR1249-13	26	581	29.90	59.80	10.70	12.90	104
YXR1249-14	28	714	32.20	64.40	11.30	13.60	112
YXR1249-15	30	859	34.50	69.00	11.80	14.30	120
YXR1249-16	32	1026	36.80	73.60	12.50	15.20	128
YXR1249-17	34	1257	39.10	78.20	13.30	16.20	136
YXR1249-18	36	1465	41.40	82.80	14.10	17.30	142
YXR1249-19	38	1706	43.70	87.40	14.90	18.40	150



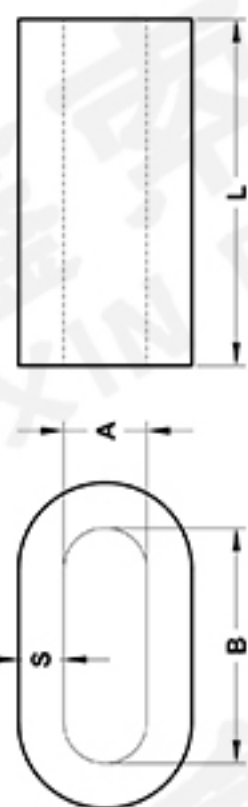
EN13411-3 (DIN3093) FORM C ALUMINIUM FERRULES

ITEM NO.	FURRULE CODE	DIMENSIONS (MM)	
		L1	L2
YXR1250-01	8	43	34
YXR1250-02	9	48	38.5
YXR1250-03	10	53	42
YXR1250-04	11	59	46.7
YXR1250-05	12	65	50.2
YXR1250-06	13	70	54.7
YXR1250-07	14	75	58.2
YXR1250-08	16	85	66.5
YXR1250-09	18	96	75
YXR1250-10	20	106	83
YXR1250-11	22	116	91
YXR1250-12	24	126	99.5
YXR1250-13	26	136	107.2
YXR1250-14	28	147	115.5
YXR1250-15	30	158	125
YXR1250-16	32	170	135
YXR1250-17	36	190	150
YXR1250-18	38	200	158
YXR1250-19	44	235	186
YXR1250-20	52	276	218



YXR1250

- ◆ The inspection hole guarantees control of the correct inserted length of wire rope before and after swaging.
- ◆ These types of sleeves have to be swaged with the conical type C swaging dies.



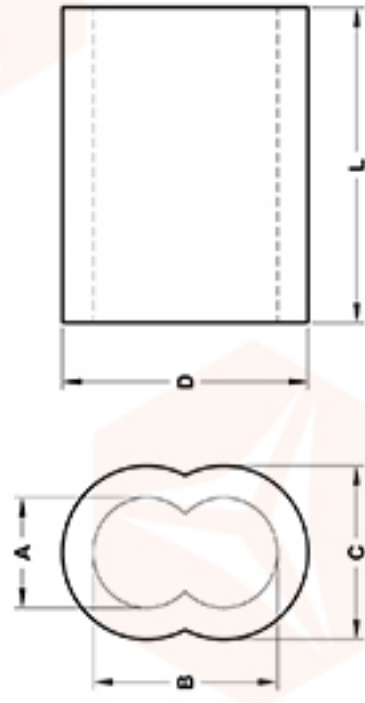
EN13411-3 (DIN3093) COPPER FERRULES

ITEM NO.	FERRULE CODE	WEIGHT PER 1000 (KG)	DIMENSIONS (MM)			
			A	B	S	L
YXR1251-01	1	0.32	1.2	2.4	0.65	5
YXR1251-02	1.5	0.72	1.7	3.4	0.75	6
YXR1251-03	2	0.82	2.2	4.4	0.85	7
YXR1251-04	2.5	1.7	2.7	5.4	1.05	9
YXR1251-05	3	2.9	3.3	6.6	1.25	11
YXR1251-06	3.5	4.5	3.8	7.6	1.5	13
YXR1251-07	4	6.2	4.4	8.8	1.7	14
YXR1251-08	4.5	8.9	4.9	9.8	1.9	16
YXR1251-09	5	12.2	5.5	11.0	2.1	18
YXR1251-10	6	20	6.6	13.2	2.5	21
YXR1251-11	6.5	27	7.2	14.4	2.7	23
YXR1251-12	7	32	7.8	15.6	2.9	25
YXR1251-13	8	47	8.8	17.6	3.3	28
YXR1251-14	9	68	9.9	19.8	3.7	32
YXR1251-15	10	90	10.9	21.8	4.1	35
YXR1251-16	11	122	12.1	24.2	4.5	39
YXR1251-17	12	158	13.2	26.4	4.9	42
YXR1251-18	13	198	14.2	28.4	5.4	46
YXR1251-19	14	243	15.3	30.6	5.8	49
YXR1251-20	16	366	17.5	35.0	6.7	56
YXR1251-21	18	529	19.6	39.2	7.6	63



YXR1251

US TYPE COPPER HOURGLASS SLEEVES



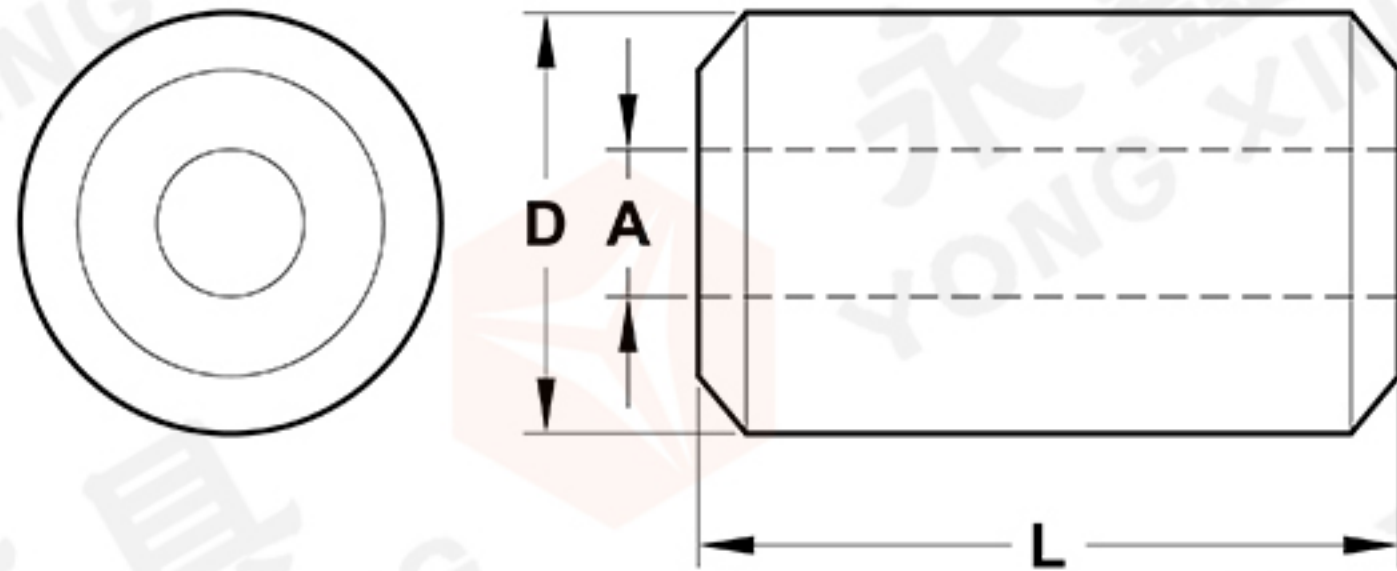
YXR1252

ITEM NO.	SIZE (IN)	WEIGHT PER 1000 (KG)	DIMENSIONS (MM)				
			A	B	C	D	L
YXR1252-01	3/64	1.12	1.59	3.18	3.57	5.16	9.50
YXR1252-02	1/16	1.43	2.06	4.05	4.36	6.35	9.70
YXR1252-0	5/64	2.61	2.45	4.85	5.55	7.95	10.70
YXR1252-0	3/32	4.39	3.35	6.55	7.05	10.25	11.50
YXR1252-0	1/8	8.20	3.97	8.33	8.33	12.69	14.30
YXR1252-06	5/32	11.07	4.80	9.55	9.56	14.31	15.90
YXR1252-07	3/36	20.63	5.64	11.20	11.08	16.64	22.20
YXR1252-08	7/32	22.58	6.60	13.00	11.90	18.30	22.20
YXR1252-09	1/4	38.32	7.42	14.65	13.62	20.85	28.40
YXR1252-10	5/16	60.59	9.58	18.35	17.38	26.15	28.40
YXR1252-11	3/8	81.72	11.15	21.50	18.15	28.50	38.10
YXR1252-12	7/16	129.00	12.70	25.40	21.00	33.70	42.80
YXR1252-13	1/2	183.05	15.10	28.20	24.60	37.70	47.60

- ◆ Extruded copper hourglass sleeves and stop buttons have efficient cold forming properties, and are ideal for non-rusting permanent splices. These sleeves and buttons are 99% pure copper, and the mass of copper provides excellent holding strength.
- ◆ Return eye splice using copper hourglass sleeves will attain 95% of Improved Plow wire rope catalog strength when properly swaged.
- ◆ CAUTION: Return eye slings using copper hourglass sleeves must be properly swaged to attain strength.



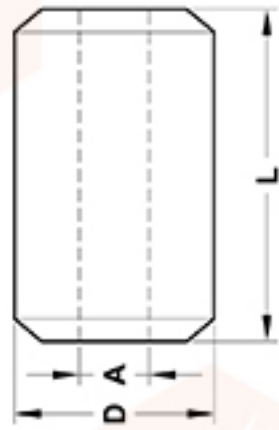
YXR1253



US TYPE COPPER BUTTON STOPS

ITEM NO.	SIZE (IN)	WEIGHT PER 1000 (KG)	DIMENSIONS (MM)		
			A	D	L
YXR1253-01	3/64	0.67	1.59	4.46	5.56
YXR1253-02	1/16	0.96	1.98	5.16	5.56
YXR1253-03	3/32	3.9	2.78	8.33	8.33
YXR1253-04	1/8	3.3	3.97	8.33	8.33
YXR1253-05	5/32	6.5	4.76	10.72	8.33
YXR1253-06	3/16	6.2	5.56	10.72	8.33
YXR1253-07	7/32	6.0	6.35	10.72	15.88
YXR1253-08	1/4	32	7.14	16.67	17.46
YXR1253-09	5/16	29	9.53	16.67	17.46

- ◆ Zinc Plated, Nickel Plated & Chrome Plated are available on request.



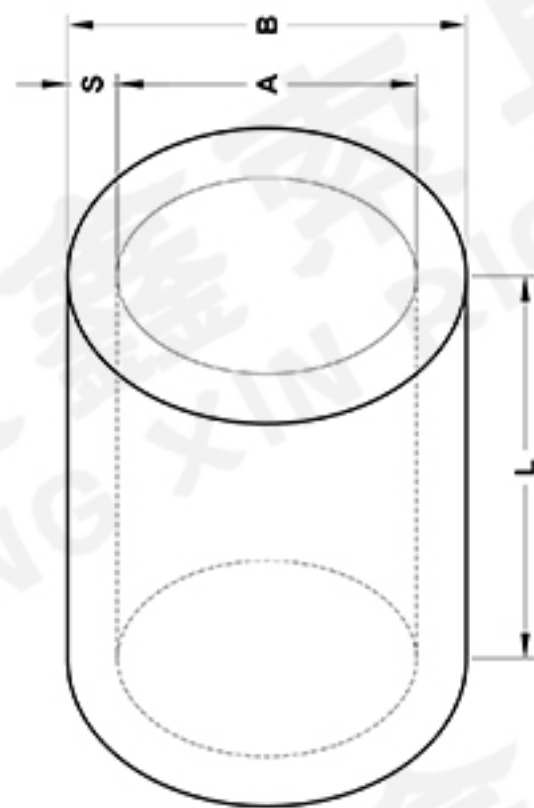
YXR1254

US TYPE STEEL STOP BUTTONS

ITEM NO.	SIZE (IN)	WEIGHT PER 100 (KG)	DIMENSIONS (MM)			MAX AFTER SWAGE DIA.(MM)
			A	D	L	
YXR1254-01	1/8	9.1	3.56	10.7	12.7	10.2
YXR1254-02	3/16	18.1	5.08	14.2	17.8	13.2
YXR1254-03	1/4	36.3	7.87	17.3	26.9	14.7
YXR1254-04	5/16	72.6	9.14	22.4	28.7	19.6
YXR1254-05	3/8	68	10.7	22.4	37.6	19.6
YXR1254-06	7/16	136	12.2	28.7	41.4	26.2
YXR1254-07	1/2	227	14.0	33.3	48.0	29.5
YXR1254-08	9/16	318	15.5	36.6	51.3	32.8
YXR1254-09	5/8	454	17.0	39.6	61.5	36.1
YXR1254-10	3/4	590	20.3	42.7	69.6	39.6
YXR1254-11	7/8	1000	23.9	50.8	83.1	45.7
YXR1254-12	1	1410	26.9	57.2	93.2	52.1
YXR1254-13	1-1/8	2040	30.2	65.0	103	58.4
YXR1254-14	1-1/4	2950	33.8	71.4	116	65.0

◆ Specially processed low carbon steel
◆ Note: Steel Stop Buttons Sleeves are recommended for use with 6x19 or 6x37, IPS ORxIP(EIP), RRL, FC or IWRC wire rope.

SEAMLESS ALUMINIUM TUBE



YXR1255

ITEM NO.	ITEM NO.	WEIGHT PCS (KG)	DIMENSIONS (MM)		
			B	S	L
YXR1255-01	#6	0.7	16	2.5	25
YXR1255-02	#7	1.2	18.5	3	30
YXR1255-03	#8	1.7	21	3.5	34
YXR1255-04	#9	2.4	23.5	4	38
YXR1255-05	#10	3.2	26	4	42
YXR1255-06	#11	4.4	29	4.5	47
YXR1255-07	#12	5.5	32	5	50
YXR1255-08	#13	7.2	34	5.5	55
YXR1255-09	#14	8.9	37	6	59
YXR1255-10	#16	13.5	42	7	67
YXR1255-11	#18	20	48	8	76
YXR1255-12	#20	32.1	53	8.5	84
YXR1255-13	#22	40.4	58	9.5	92
YXR1255-14	#24	46.3	63	10	101
YXR1255-15	#26	62	68	11	109
YXR1255-16	#28	75	75	12	118
YXR1255-17	#30	91	80	13	126
YXR1255-18	#32	108	85	13	134
YXR1255-19	#34	137	90	14	143
YXR1255-20	#36	155	95	16	152
YXR1255-21	#38	181	100	16	160
YXR1255-22	#40	210	106	17	168
YXR1255-23	#44	278	116	19	184
YXR1255-24	#48	353	125	20	200
YXR1255-25	#52	450	136	22	216
YXR1255-26	#56	560	147	23	232
YXR1255-27	#60	686	158	25	248
YXR1255-28	#65	990	171	28	284